



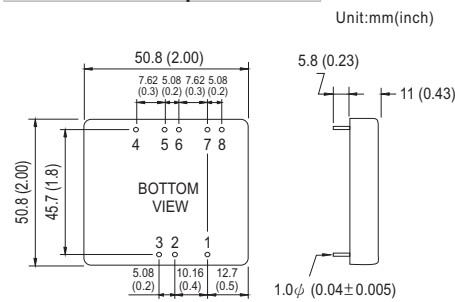
- Features :
 - 2:1 wide input range
 - High efficiency up to 92%
 - 1500VDC I/O isolation
 - Built-in EMI filter
 - Built-in remote ON / OFF control
 - Built-in remote sense
 - Trimming output \pm 0%
 - Protections: Short circuit / Overload / Over voltage
 - Cooling by free air convection
 - Six-sided shield metal case
 - 100% burn-in test
 - Low cost / High reliability
 - Output 3.3V/9V available
 - Approvals: FCC / EAC / CE / UKCA
 - 2 years warranty



SPECIFICATION

ORDER NO.	SKA40A-05	SKA40B-05	SKA40C-05	SKA40A-12	SKA40B-12	SKA40C-12	SKA40A-15	SKA40B-15	SKA40C-15
OUTPUT	DC VOLTAGE			12V			15V		
	CURRENT RANGE			0.3 ~ 3.33A			0.26 ~ 2.67A		
	RATED POWER			40W			40W		
	RIPPLE & NOISE (max.) Note.2			80mVp-p			100mVp-p		
	LINE REGULATION Note.3			$\pm 0.5\%$					
	LOAD REGULATION Note.4			$\pm 0.5\%$					
	VOLTAGE ACCURACY			$\pm 2.0\%$					
	SWITCHING FREQUENCY			200KHz min.					
	EXTERNAL CAPACITANCE LOAD (max.)			1000uF					
EXTERNAL TRIM Adj. RANGE(Typ.)			$\pm 10\%$						
INPUT	VOLTAGE RANGE A: 9 ~ 18VDC B: 18 ~ 36VDC C: 36 ~ 75VDC								
	EFFICIENCY (Typ.) A: 91% B: 92% C: 91% D: 90% E: 90% F: 88.5% G: 90% H: 90.5% I: 90%								
	DC CURRENT Full load A: 3850mA B: 1900mA C: 1000mA No load A: 150mA B: 100mA C: 65mA								
	FILTER Pi network								
	REMOTE CONTROL Power ON : R.C ~ -Vin > 2.5VDC or open circuit ; Power OFF : R.C ~ -Vin < 0.5VDC or short								
PROTECTION (Note. 5)	OVER CURRENT 110% ~ 180% rated output power Protection type : Hiccup mode, recovers automatically after fault condition is removed								
	SHORT CIRCUIT All output equipped with short circuit Protection type : Hiccup mode, recovers automatically after fault condition is removed								
	OVER VOLTAGE 5Vo : 7V ~ 8.95V ; 12Vo : 15V ~ 19.2V ; 15Vo : 18V ~ 23.3V Protection type : Clamp by TVS diode								
ENVIRONMENT	WORKING TEMP. -40 ~ +80°C (Refer to "Derating Curve")								
	WORKING HUMIDITY 20% ~ 90% RH non-condensing								
	STORAGE TEMP., HUMIDITY -55 ~ +105°C, 10 ~ 95% RH								
	TEMP. COEFFICIENT $\pm 0.03\% / ^\circ\text{C}$ (0 ~ 50°C)								
SAFETY & EMC	VIBRATION 10 ~ 500Hz, 2G 10min./1cycle, period for 60min. each along X, Y, Z axes								
	SAFETY STANDARDS EAC TP TC 020/2011 (EAC TP TC 004 for 48Vin type only) approved								
	WITHSTAND VOLTAGE I/P-O/P: 1.5KVDC								
	ISOLATION RESISTANCE I/P-O/P: 100M Ohms / 500VDC / 25°C / 70% RH								
OTHERS	EMC EMISSION Compliance to BS EN/EN55032 Class A, FCC part 15 Class A, EAC TP TC 020								
	EMC IMMUNITY Compliance to BS EN/EN61000-4-2,3,4,5,6,8, light industry level, criteria A, EAC TP TC 020								
OTHERS	DIMENSION 50.8*50.8*11.0 mm or 2**2**0.43" inch (L*W*H)								
	WEIGHT 60g								

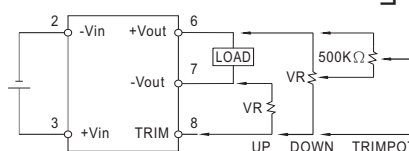
Mechanical Specification



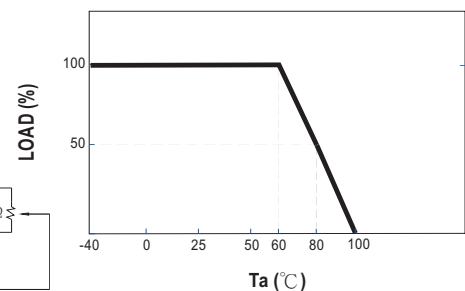
Pin Configuration

Pin No.	Output	Pin No.	Output
1	R.C	5	+R.S
2	-Vin	6	+Vout
3	+Vin	7	-Vout
4	-R.S	8	TRIM

External Output Trimming



Derating Curve



NOTE

- All parameters are specified at normal input, rated load, 25°C 70% RH ambient.
 - Ripple & noise are measured at 20MHz by using a 12" twisted pair terminated with a 0.1uF & 47uF capacitor.
 - Line regulation is measured from low line to high line at rated load.
 - Load regulation is measured from 10% to 100% rated load.
 - Please prevent the converter from operating in overload or short circuit condition for more than 30 seconds.
- ※ Product Liability Disclaimer : For detailed information, please refer to <https://www.meanwell.com/serviceDisclaimer.aspx>