

RDD05U SERIES

DC - DC CONVERTER
4 ~ 6W SINGLE & DUAL OUTPUT



FEATURES

- 2:1 & 4:1 WIDE INPUT RANGE
- I/O ISOLATION
- INPUT Pi FILTER
- SHORT CIRCUIT PROTECTION
- HIGH PERFORMANCE
- 3 YEARS WARRANTY



MODEL LIST

MODEL NO.	INPUT VOLTAGE	INPUT CURRENT (typ.) (max.)		OUTPUT WATTAGE	OUTPUT VOLTAGE	OUTPUT CURRENT	EFF. (min.)	EFF. (typ.)	CAPACITOR LOAD (max.)
-----------	---------------	-------------------------------	--	----------------	----------------	----------------	-------------	-------------	-----------------------

Single Output Models

RDD05 - 03S1U	9~18 VDC	0.52A	0.73A	5 WATTS	+3.3 VDC	1500 mA	77%	79%	2200 μ F
RDD05 - 05S1U	9~18 VDC	0.51A	0.72A	5 WATTS	+ 5 VDC	1000 mA	79%	81%	1500 μ F
RDD05 - 12S1U	9~18 VDC	0.60A	0.83A	6 WATTS	+ 12 VDC	500 mA	82%	84%	270 μ F
RDD05 - 15S1U	9~18 VDC	0.60A	0.83A	6 WATTS	+ 15 VDC	400 mA	83%	85%	180 μ F
RDD05 - 03S2U	18~36 VDC	0.26A	0.36A	5 WATTS	+3.3 VDC	1500 mA	77%	79%	2200 μ F
RDD05 - 05S2U	18~36 VDC	0.25A	0.36A	5 WATTS	+ 5 VDC	1000 mA	79%	81%	1500 μ F
RDD05 - 12S2U	18~36 VDC	0.30A	0.42A	6 WATTS	+ 12 VDC	500 mA	81%	83%	270 μ F
RDD05 - 15S2U	18~36 VDC	0.30A	0.42A	6 WATTS	+ 15 VDC	400 mA	81%	83%	180 μ F
RDD05 - 03S3U	35~75 VDC	0.13A	0.19A	5 WATTS	+3.3 VDC	1500 mA	77%	79%	2200 μ F
RDD05 - 05S3U	35~75 VDC	0.13A	0.18A	5 WATTS	+ 5 VDC	1000 mA	79%	81%	1500 μ F
RDD05 - 12S3U	35~75 VDC	0.15A	0.22A	6 WATTS	+ 12 VDC	500 mA	80%	82%	270 μ F
RDD05 - 15S3U	35~75 VDC	0.15A	0.22A	6 WATTS	+ 15 VDC	400 mA	81%	83%	180 μ F
RDD05 - 03S4U	9~36 VDC	0.22A	0.62A	4 WATTS	+3.3 VDC	1200 mA	75%	77%	2200 μ F
RDD05 - 05S4U	9~36 VDC	0.27A	0.76A	5 WATTS	+ 5 VDC	1000 mA	77%	79%	1500 μ F
RDD05 - 12S4U	9~36 VDC	0.31A	0.87A	6 WATTS	+ 12 VDC	500 mA	80%	82%	270 μ F
RDD05 - 15S4U	9~36 VDC	0.31A	0.87A	6 WATTS	+ 15 VDC	400 mA	80%	82%	180 μ F
RDD05 - 03S5U	18~75 VDC	0.11A	0.31A	4 WATTS	+3.3 VDC	1200 mA	75%	77%	2200 μ F
RDD05 - 05S5U	18~75 VDC	0.13A	0.38A	5 WATTS	+ 5 VDC	1000 mA	77%	79%	1500 μ F
RDD05 - 12S5U	18~75 VDC	0.15A	0.43A	6 WATTS	+ 12 VDC	500 mA	80%	82%	270 μ F
RDD05 - 15S5U	18~75 VDC	0.15A	0.43A	6 WATTS	+ 15 VDC	400 mA	80%	82%	180 μ F

Dual Output Models

RDD05 - 05D1U	9~18 VDC	0.51A	0.72A	5 WATTS	\pm 5 VDC	\pm 500 mA	80%	82%	\pm 680 μ F
RDD05 - 12D1U	9~18 VDC	0.60A	0.83A	6 WATTS	\pm 12 VDC	\pm 250 mA	82%	84%	\pm 150 μ F
RDD05 - 15D1U	9~18 VDC	0.59A	0.83A	6 WATTS	\pm 15 VDC	\pm 200 mA	83%	85%	\pm 68 μ F
RDD05 - 05D2U	18~36 VDC	0.26A	0.36A	5 WATTS	\pm 5 VDC	\pm 500 mA	79%	81%	\pm 680 μ F

MODEL LIST

MODEL NO.	INPUT VOLTAGE	INPUT CURRENT		OUTPUT WATTAGE	OUTPUT VOLTAGE	OUTPUT CURRENT	EFF. (min.)	EFF. (typ.)	CAPACITOR LOAD (max.)
		(typ.)	(max.)						

Dual Output Models

RDD05 - 12D2U	18~36 VDC	0.30A	0.42A	6 WATTS	± 12 VDC	± 250 mA	81%	83%	± 150 μF
RDD05 - 15D2U	18~36 VDC	0.31A	0.42A	6 WATTS	± 15 VDC	± 200 mA	80%	82%	± 68 μF
RDD05 - 05D3U	35~75 VDC	0.13A	0.19A	5 WATTS	± 5 VDC	± 500 mA	79%	81%	± 680 μF
RDD05 - 12D3U	35~75 VDC	0.15A	0.22A	6 WATTS	± 12 VDC	± 250 mA	81%	83%	± 150 μF
RDD05 - 15D3U	35~75 VDC	0.15A	0.22A	6 WATTS	± 15 VDC	± 200 mA	80%	82%	± 68 μF
RDD05 - 05D4U	9~36 VDC	0.27A	0.76A	5 WATTS	± 5 VDC	± 500 mA	77%	79%	± 680 μF
RDD05 - 12D4U	9~36 VDC	0.31A	0.87A	6 WATTS	± 12 VDC	± 250 mA	80%	82%	± 150 μF
RDD05 - 15D4U	9~36 VDC	0.31A	0.87A	6 WATTS	± 15 VDC	± 200 mA	80%	82%	± 68 μF
RDD05 - 05D5U	18~75 VDC	0.13A	0.38A	5 WATTS	± 5 VDC	± 500 mA	77%	79%	± 680 μF
RDD05 - 12D5U	18~75 VDC	0.15A	0.43A	6 WATTS	± 12 VDC	± 250 mA	80%	82%	± 150 μF
RDD05 - 15D5U	18~75 VDC	0.15A	0.43A	6 WATTS	± 15 VDC	± 200 mA	80%	82%	± 68 μF

SPECIFICATION

All Specifications Typical At Nominal Line, Full Load, 25°C Unless Otherwise Noticed

GENERAL

Characteristics	Conditions	min.	typ.	max.	unit
Switching frequency	Vi nom, Io nom		280		KHz
Isolation voltage	Input / Output	1,500			VDC
Isolation resistance	Input / Output, @ 500VDC	100			MΩ
Isolation capacitance	100KHz / 1V		1,000		PF
Ambient temperature	Operating at Vi nom, Io nom	-40		+ 71	°C
Case temperature	Operating at Vi nom, Io nom			+ 100	°C
Derating	Vi nom	See derating curve			
Storage temperature	Non operational	-40		+ 100	°C
Relative humidity	Vi nom, Io nom	20		95	% RH
Temperature coefficient	Vi nom, Io min			± 0.02	% / °C
Dimension		L31.8 x W20.3 x H10.2			mm
MTBF	Bellcore issue 6@40°C, GB		1,120,000		Hours
Cooling	Free air convection				

INPUT SPECIFICATIONS

Characteristics	Conditions	min.	typ.	max.	unit	
Input voltage range	Ta min ... Ta max, Io nom	2:1	9	12	18	VDC
			18	24	36	VDC
			35	48	75	VDC
	4:1	9	24	36	VDC	
		18	48	75	VDC	
No load input current	Vi nom, Io = 0	12V		30	mA	
		24V		30	mA	
		48V		20	mA	
Input voltage w/o damage	Io nom	12V		20	VDC	
		24V		40	VDC	
		48V		80	VDC	
Startup voltage	Io nom	12V	8.7		VDC	
		24V	17.4		VDC	
		48V	31.5		VDC	
Input filter	Pi type					

SPECIFICATION

All Specifications Typical At Nominal Line, Full Load, 25°C Unless Otherwise Noticed

OUTPUT SPECIFICATIONS

Characteristics	Conditions	min.	typ.	max.	unit
Output voltage accuracy	Vi nom, Io nom			± 2	%
Minimum load	Vi nom, single output models	0			%
	Vi nom, dual output models (each output)	10			%
Line regulation	Io nom, Vi min ...Vi max			± 0.5	%
Load regulation	Vi nom, Io 0 ...Io nom, single output models			± 0.5	%
	Vi nom, Io min ...Io nom, dual output models			± 1	%
Cross regulation (Dual model)	Aymmetrical load 10% - 100% FL			± 5	%
Startup time	Vi nom, Io nom			700	ms
Transient recovery time	Vi nom, I ~0.5 Io nom			1	ms
Ripple & noise	Vi nom, Io nom, BW = 20MHz			50	mV
Efficiency	Vi nom, Io nom, Po / Pi	Up to 85%, See model list and efficiency curve			

CONTROL AND PROTECTION

Input reversed	Shunt diode built in, external fuse recommended 1A
Output short circuit	Current limited (Auto-recovery)
Rated over load protection	110%min....165%max

APPROVALS AND STANDARD

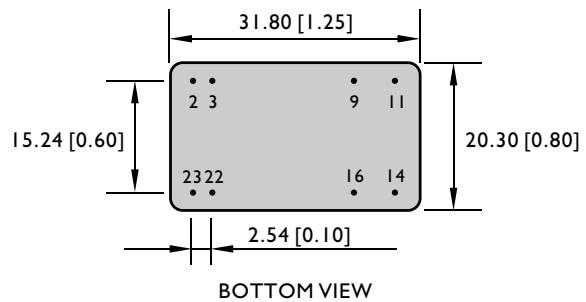
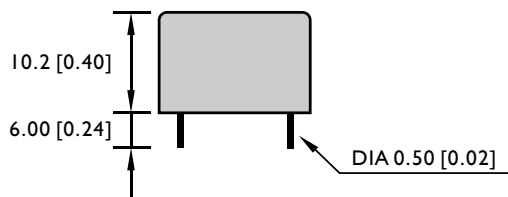
UL/cUL	UL 60950-1 Recognized
cTUVus	UL 62368-1
TUV	EN 62368-1
CE	EN 61204-3, EN 55032, Class A, EN 61000-4-2, EN61000-4-3, EN61000-4-4, EN61000-4-6
Vibration	meet IEC 60068-2-6 (10-500 Hz, 2G, along X, Y, Z each Axis, 60 min for each Axis)

PHYSICAL CHARACTERISTICS

Case size	31.8 x 20.3 x 10.2 mm (1.25 x 0.8 x 0.4 inches)
Case material	Plastic base / Metal case
Weight	18 g
Potting material	Silicone

MECHANISM & PIN CONFIGURATION

mm [inch]



GENERAL TOLERANCE	
0.00[0.00] - 30.00[1.18]	±0.30[0.01]
30.00[1.18] - 120.00[4.72]	±0.50[0.02]

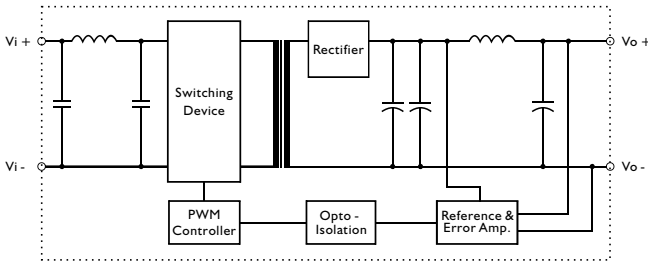
PIN ASSIGNMENT

GENERAL

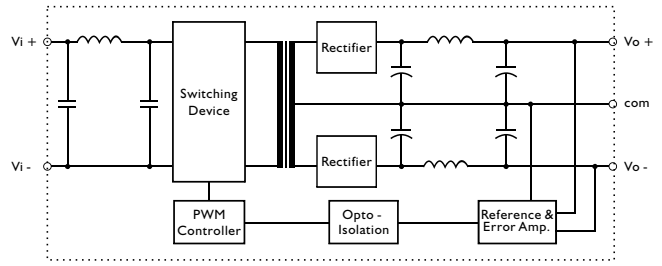
PIN NO.	2 & 3	9	11	14	16	22 & 23
SINGLE	Vi -	N. C.	N. C.	Vo+	Vo -	Vi+
DUAL	Vi -	com	Vo -	Vo+	com	Vi+

CIRCUIT SCHEMATIC

• Block diagram for RDD05U series with single output

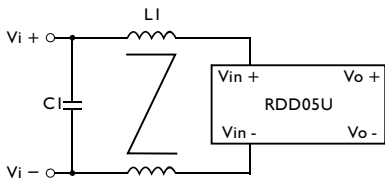


• Block diagram for RDD05U series with dual output

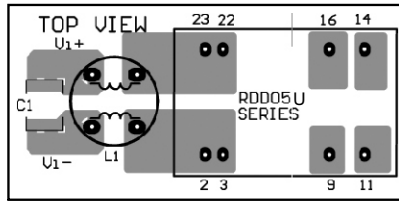


RECOMMENDED CIRCUIT

• Recommended filter for EN 55032 Class B compliance



• Recommended EN 55032 Class B filter circuit layout.



• The components used in the above figure, together with the manufacturer part numbers for these components, are as follows.

	CI	LI
RDD05-XXX1U	2.2 μ F / 50V MLCC	1.5mH common choke
RDD05-XXX2U	2.2 μ F / 50V MLCC	1.5mH common choke
RDD05-XXX3U	2.2 μ F / 100V MLCC	1.5mH common choke
RDD05-XXX4U	2.2 μ F / 50V MLCC	1.5mH common choke
RDD05-XXX5U	2.2 μ F / 100V MLCC	1.5mH common choke

DERATING AND EFFICIENCY CURVE

